



# A l'aide j'ai découvert une masse dans le pelvis ,Que faire ?

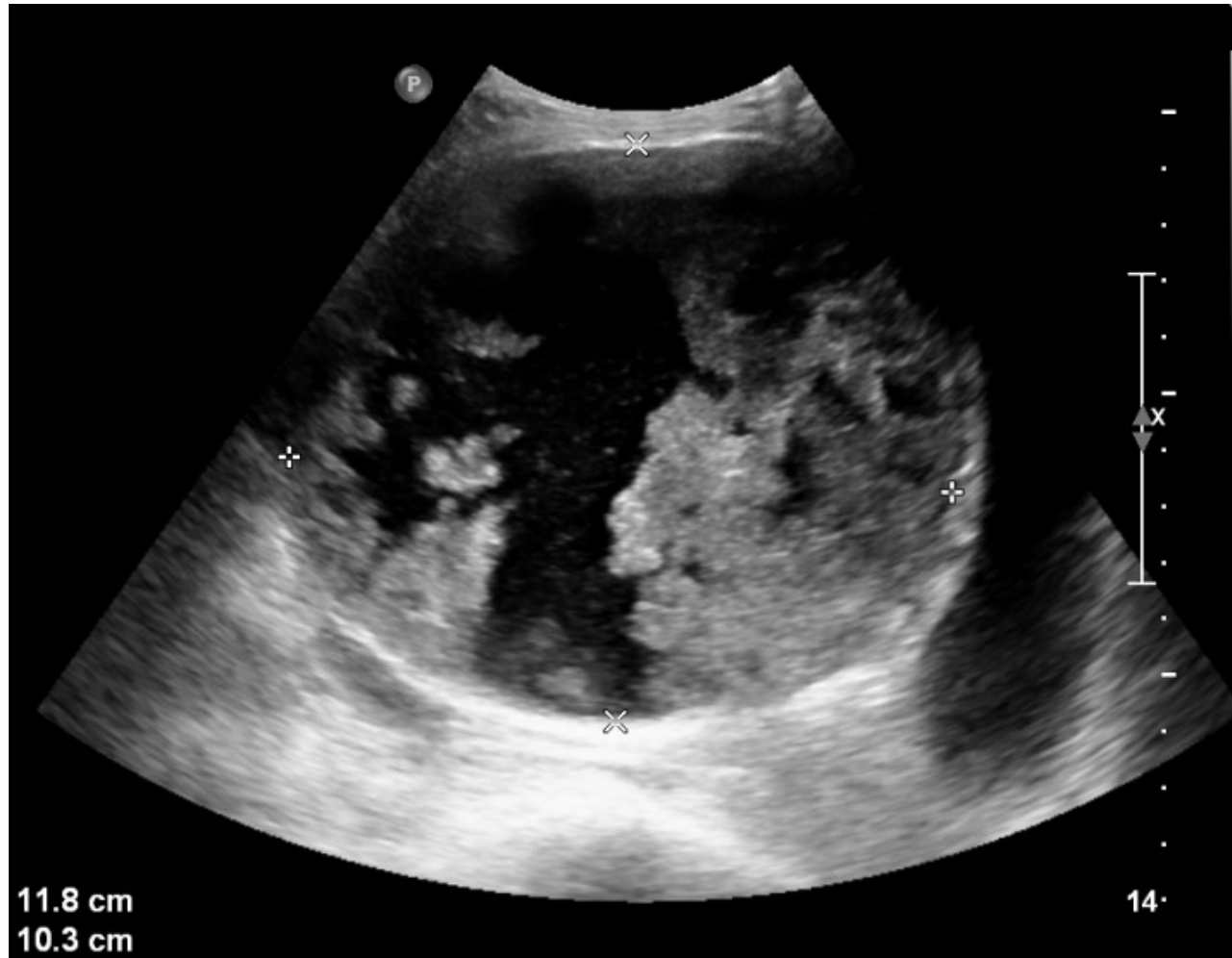


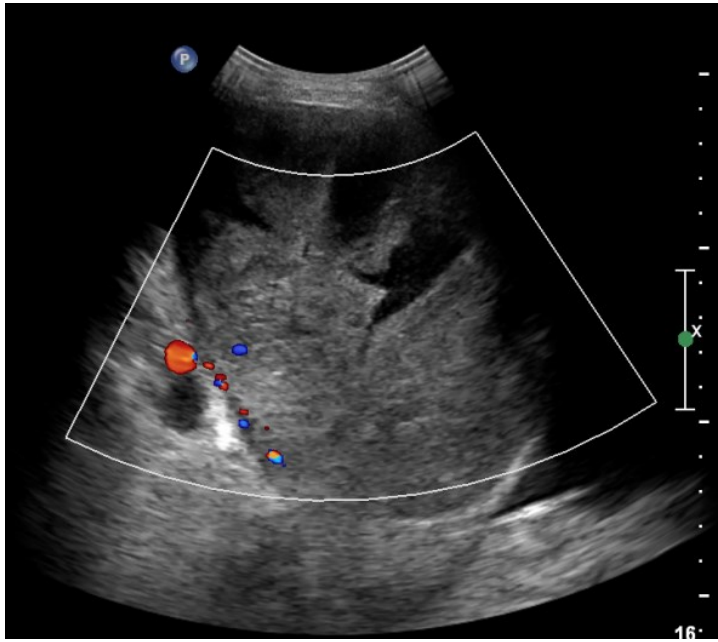
Ben Salem R

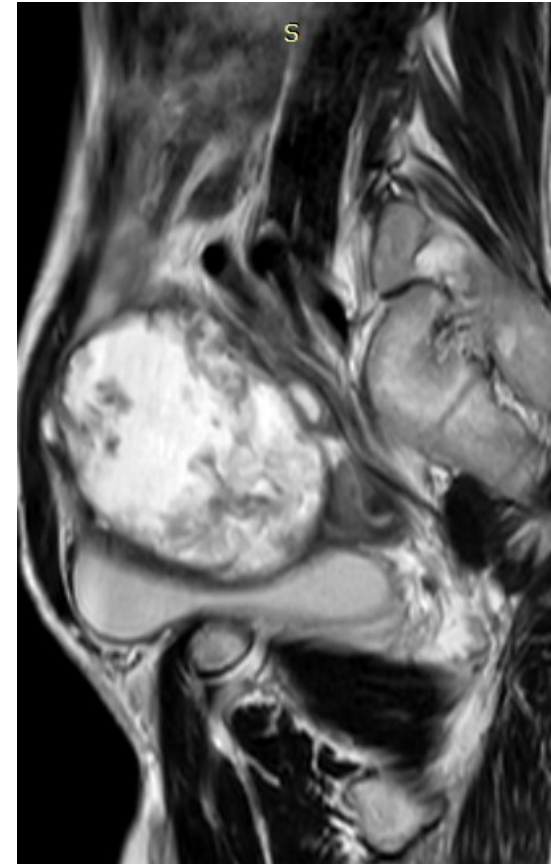
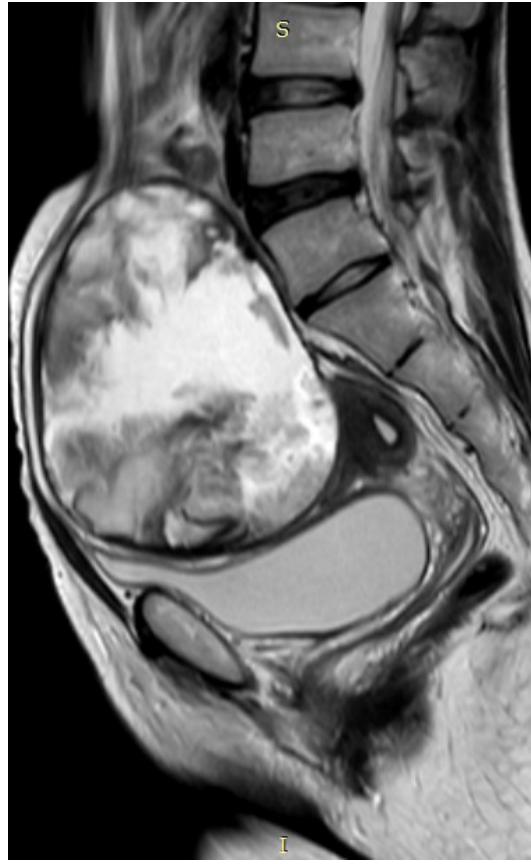
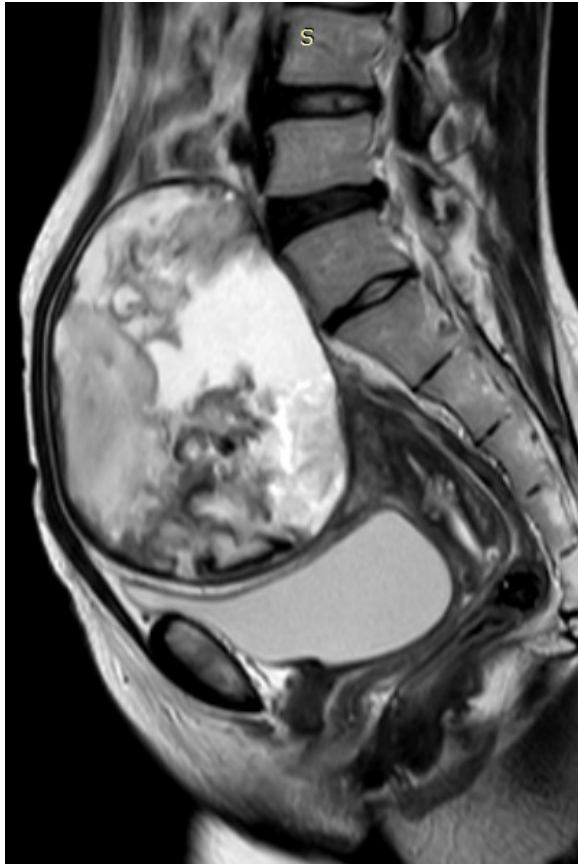
DR Zaghouani H

Service d'imagerie médicale- CHU Farhat Hached  
Sousse-Tunisie

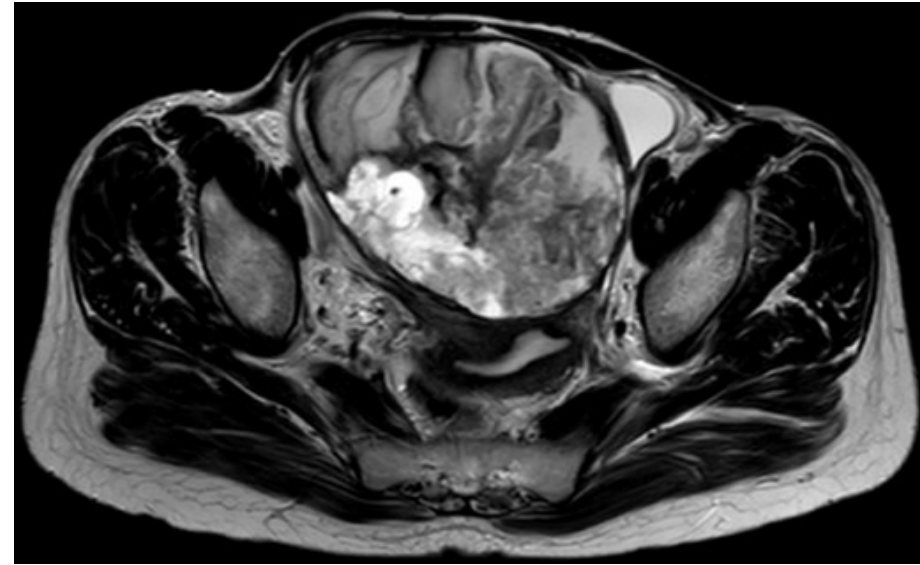
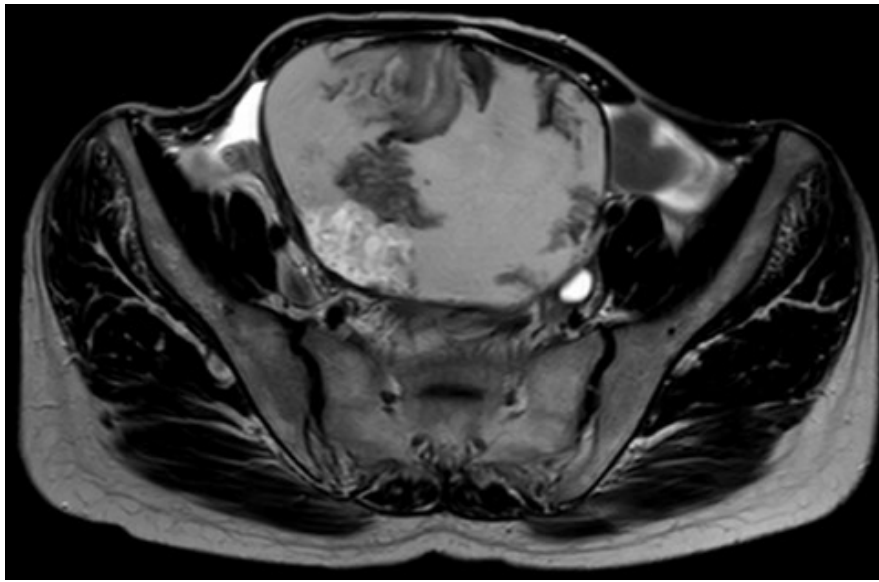
- Une échographie sus pubienne a été réalisée montrant : (Echographie endovaginale a été refusée par la patiente)



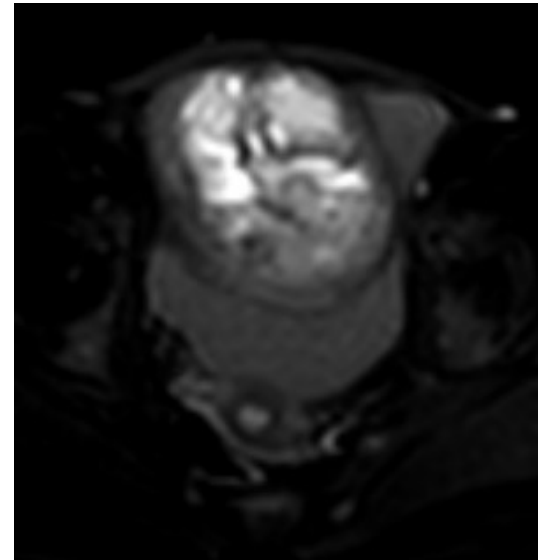
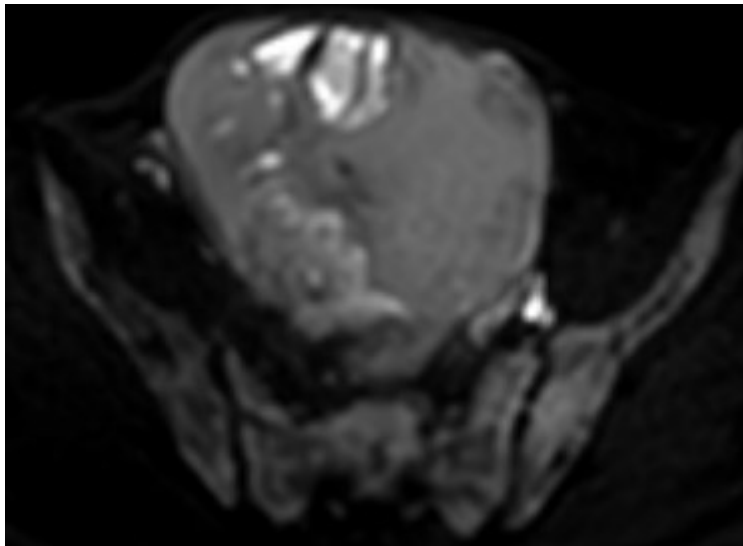




Séquence sagittale T2

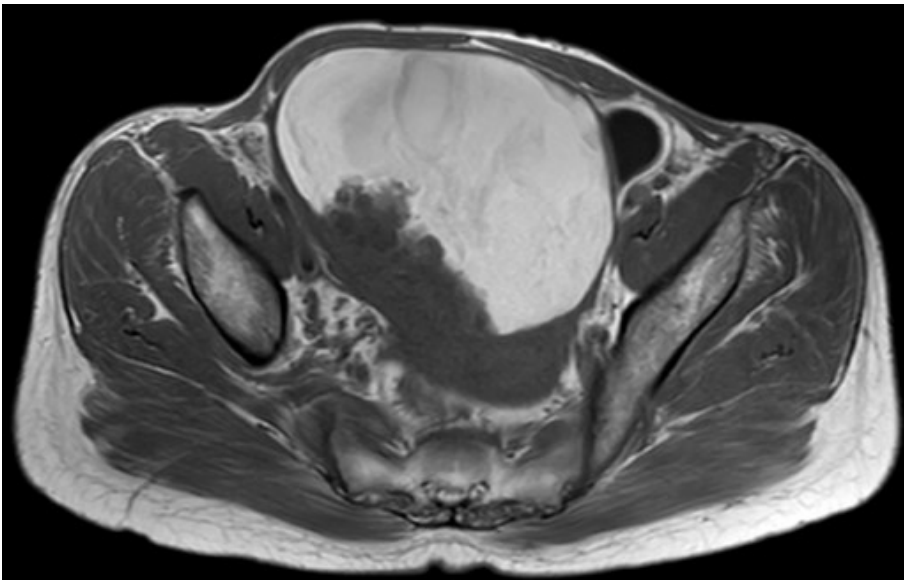


Séquence axiale T2

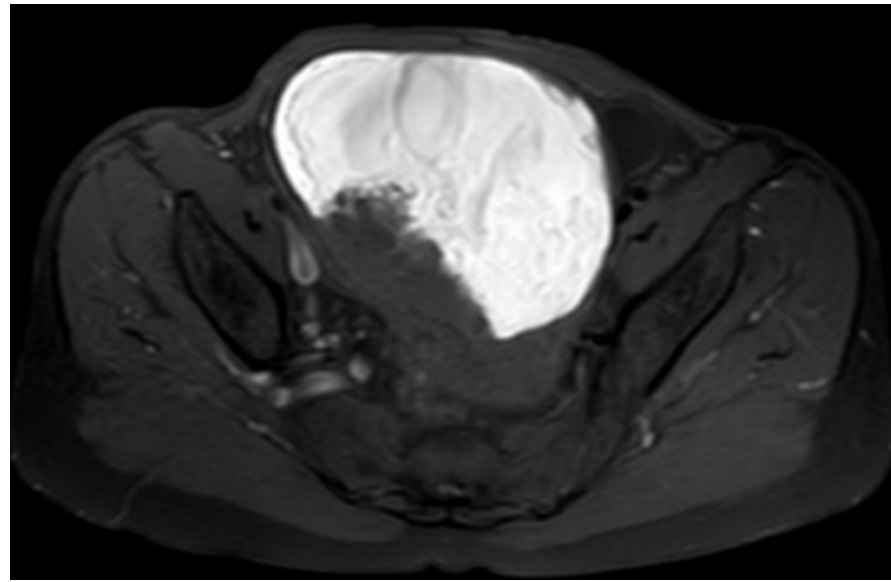


Séquence axiale Diffusion B1000





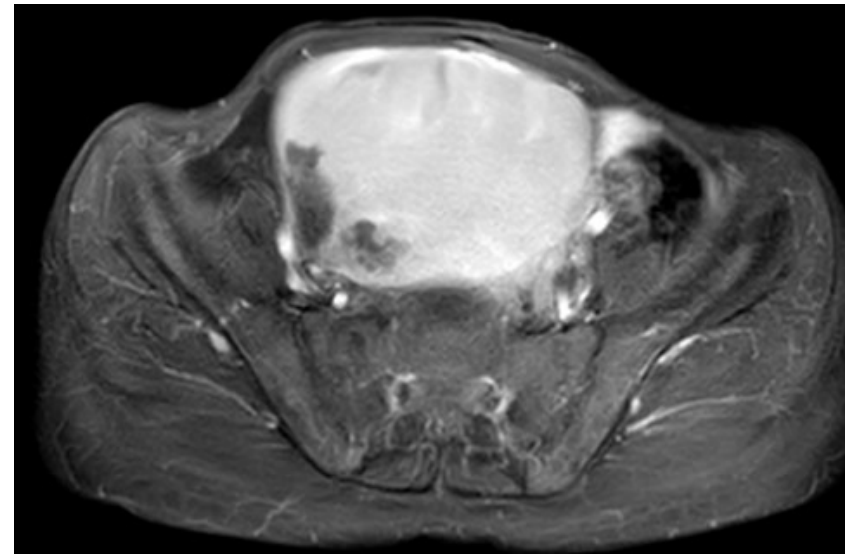
Séquence axiale T1



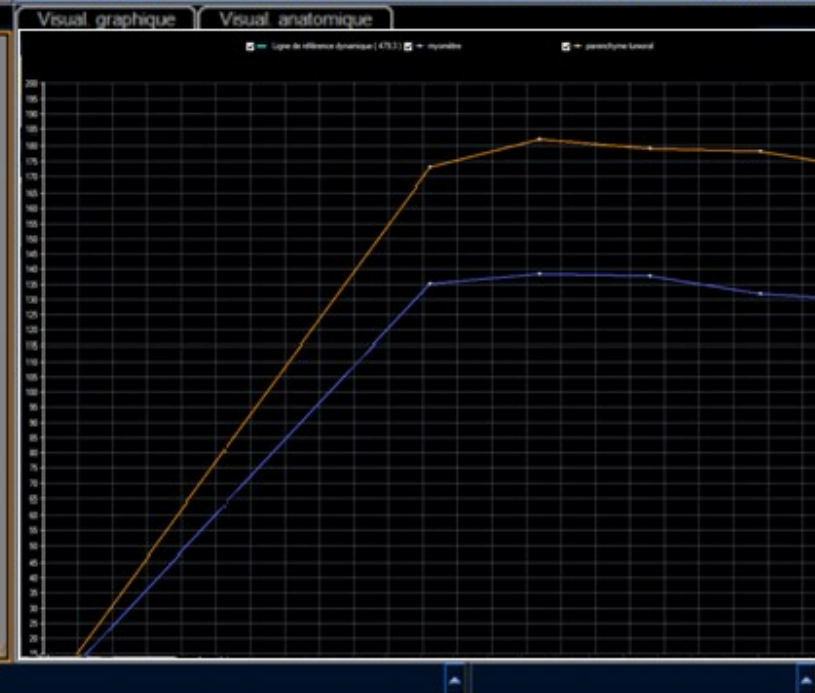
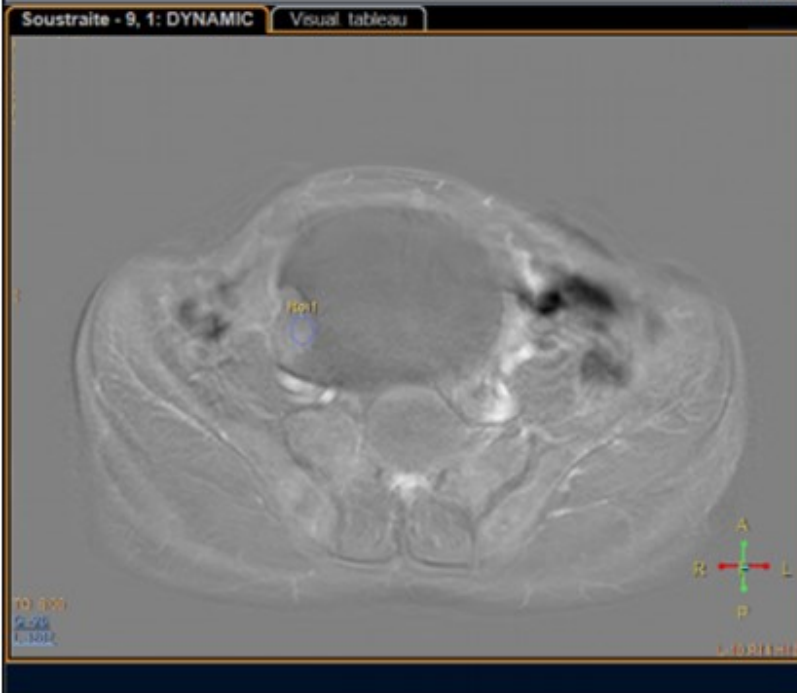
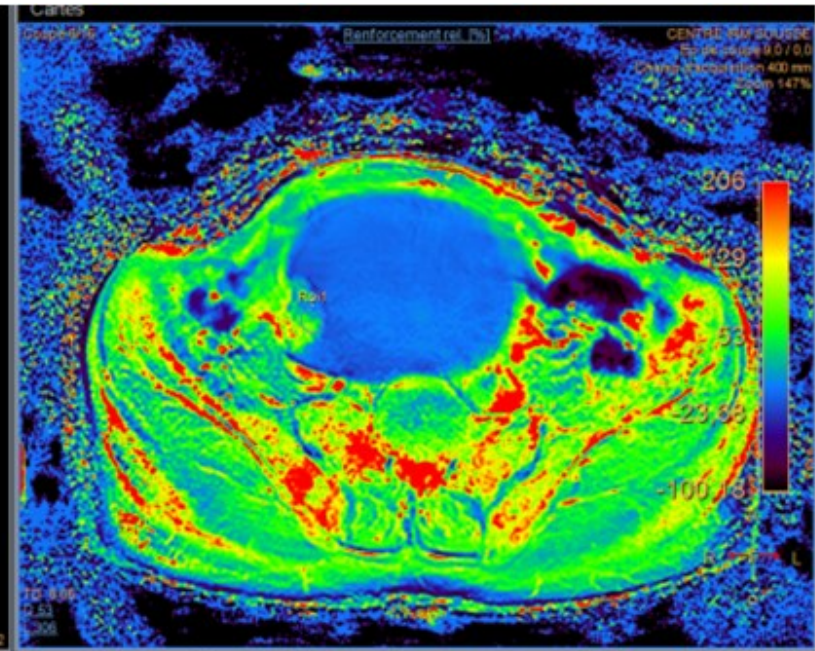
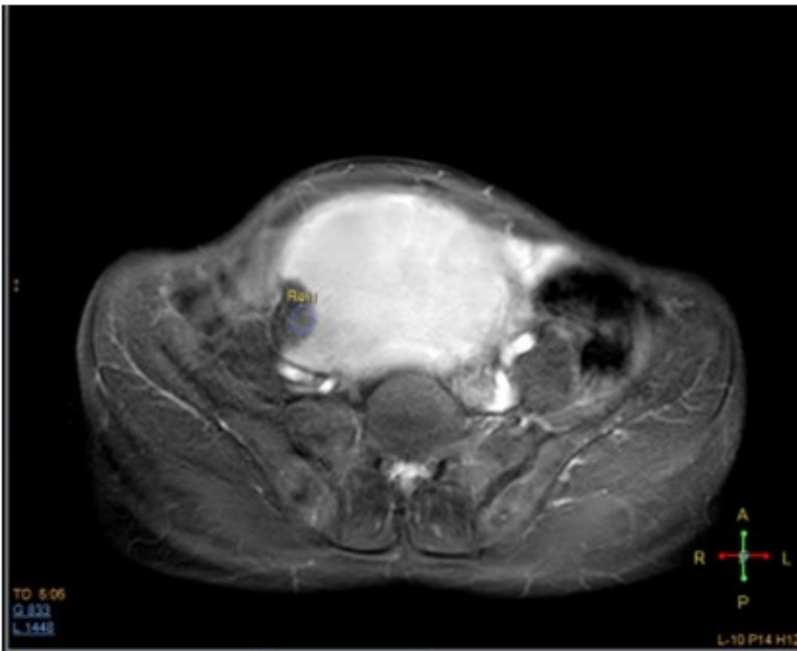
Séquence axiale T1FS

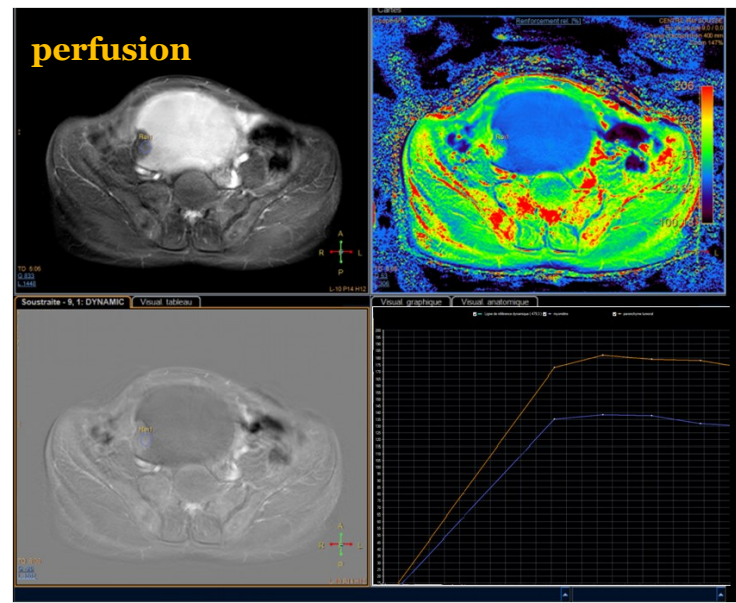
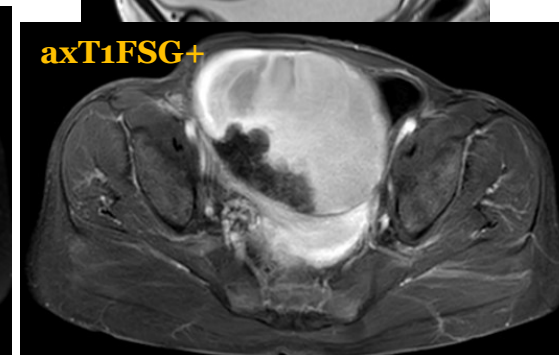
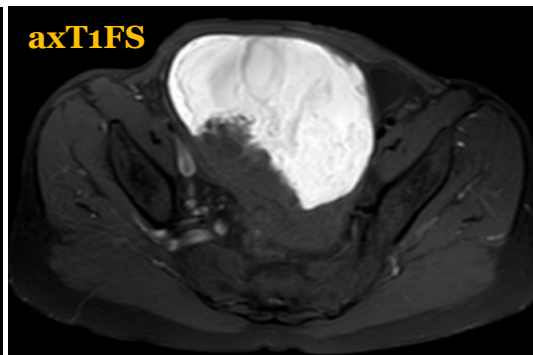
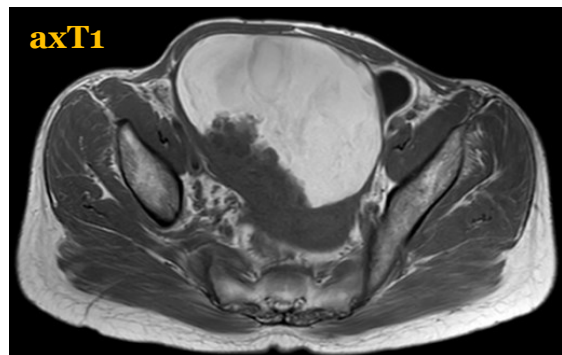
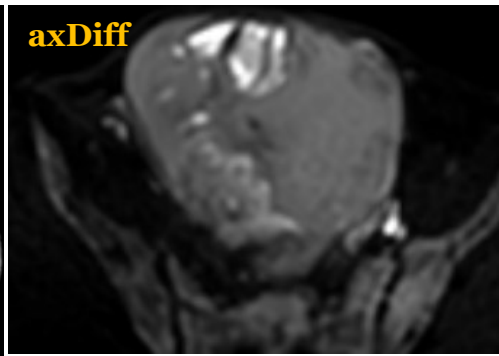
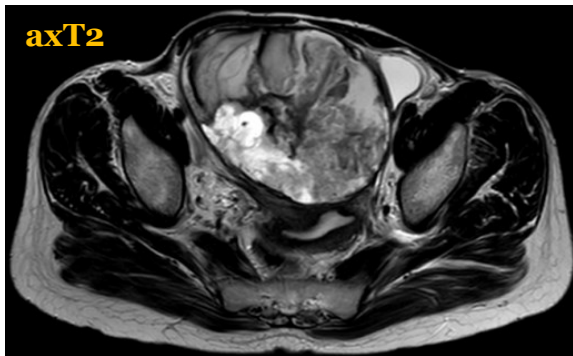


Séquence axiale T1FSGado



Séquence axiale T1FSGado







## Question 4

- Quel est votre diagnostic ?

A- Endométriome ovarien

B- Cystadénocarcinome endométrioïde

C- Cystadénocarcinome à cellules claires

D- Kyste lutéal hémorragique

E- Fibromyome dégénéré